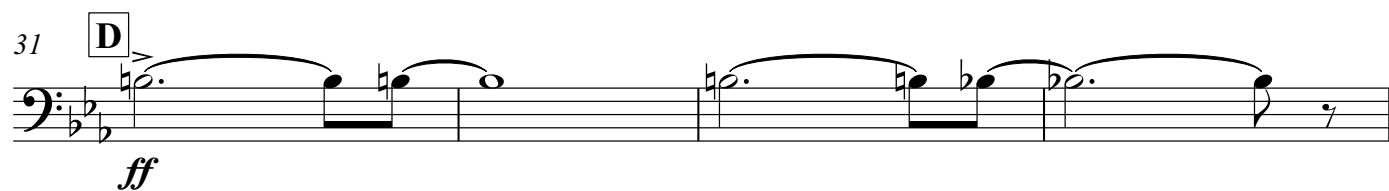
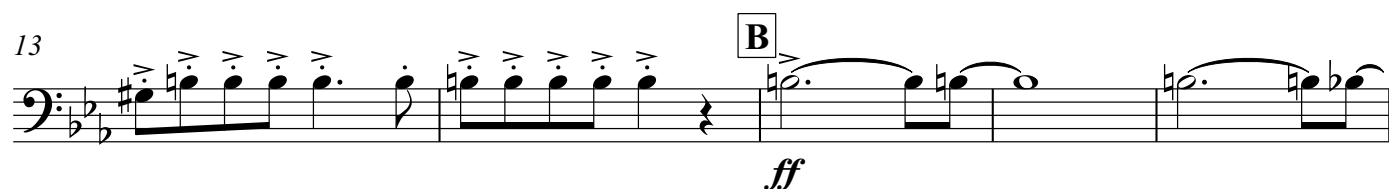


# Poker Face

ddt



V.S.

39 **F**

Musical notation for a bass line starting at measure 39. The key signature has two flats (B-flat and E-flat). The notation includes a half note F with an accent and a slur, followed by a half note E, then a quarter rest, a quarter note D-sharp, and a series of eighth notes: C, B-flat, A, G, F, E, D, C. The piece ends with a quarter note D-sharp, a quarter rest, and a final bar line.