

Alto Sax

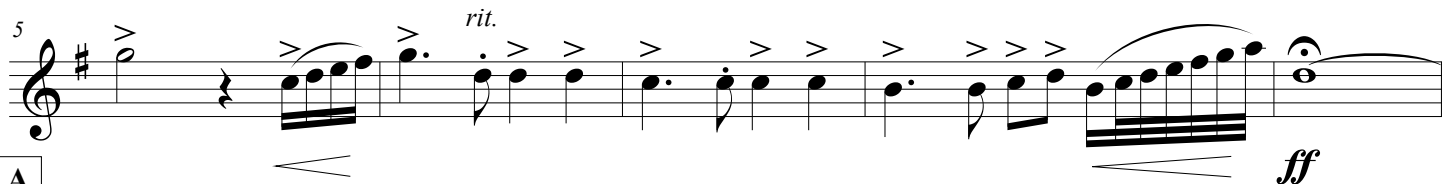
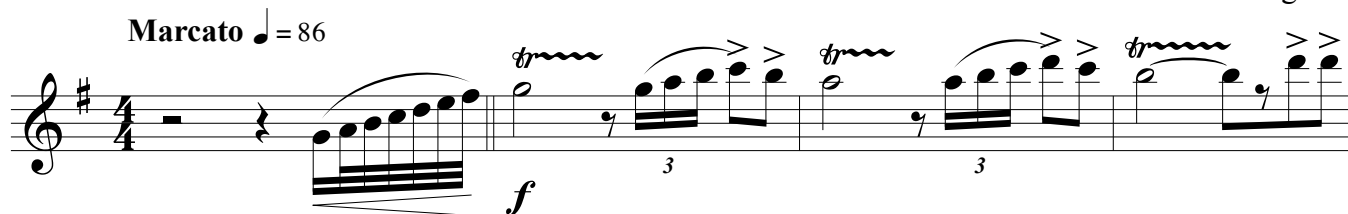
A Year In Review

Bob Jones Competition Show '14-'15

Various

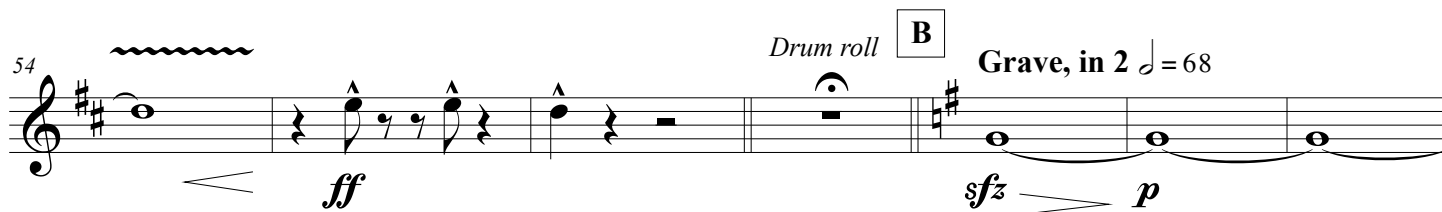
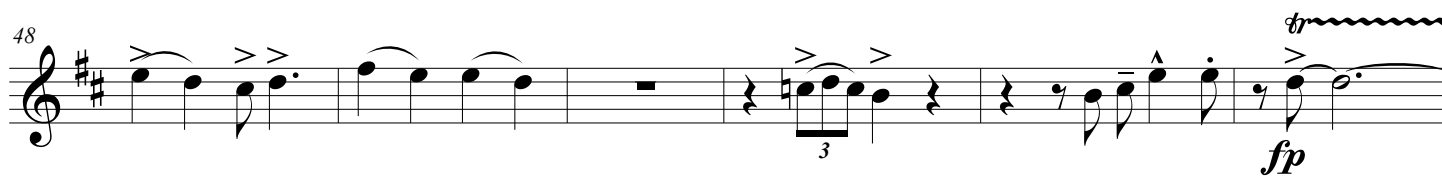
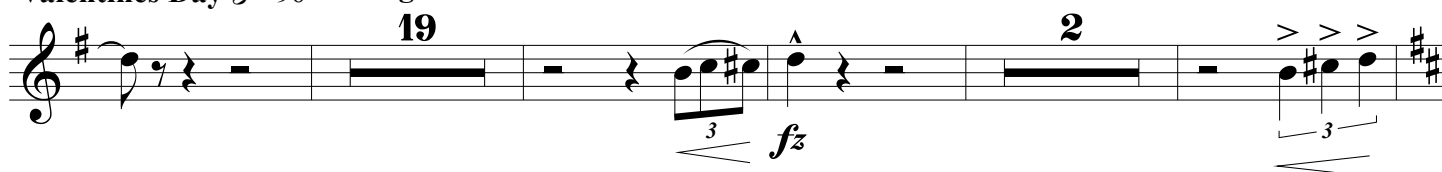
Arr. Langham

Marcato ♩ = 86



A

Valentines Day ♩ = 90 Swing! ♩ = 3/4

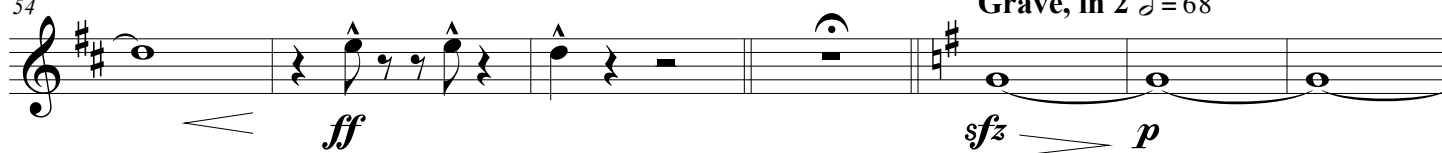


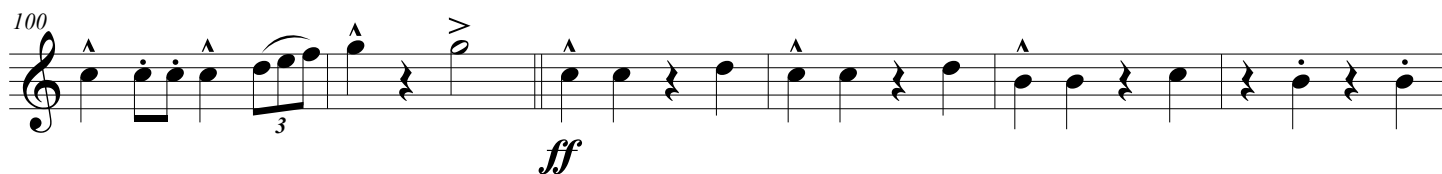
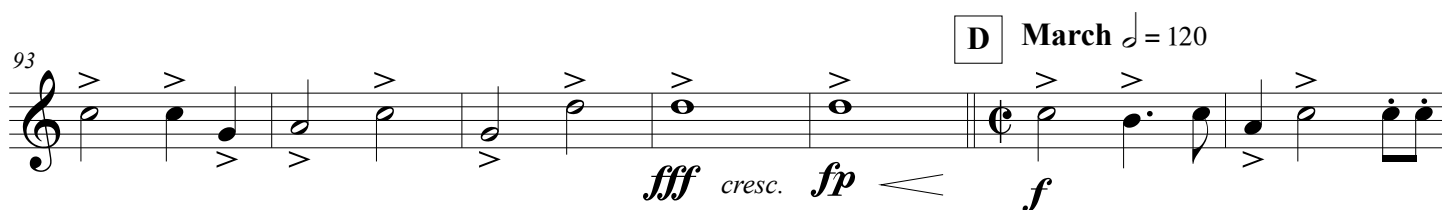
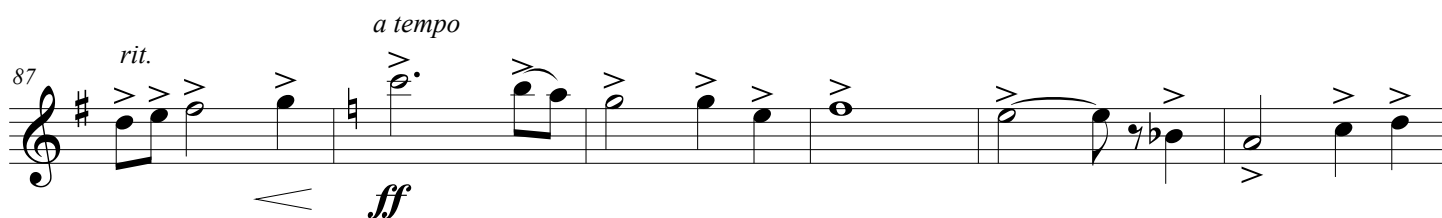
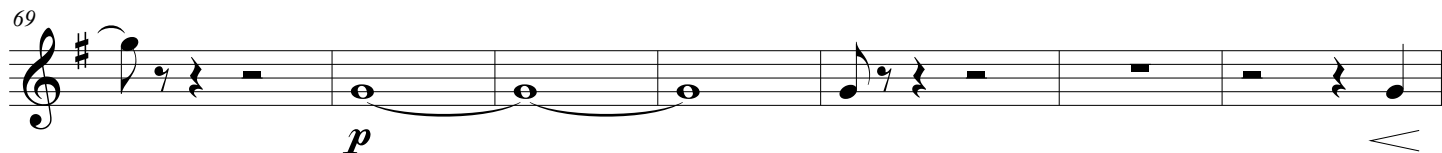
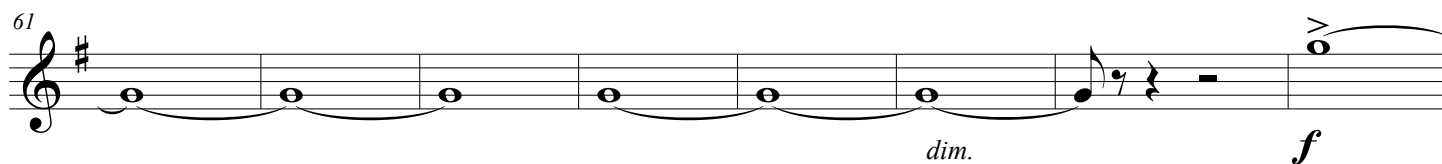
54

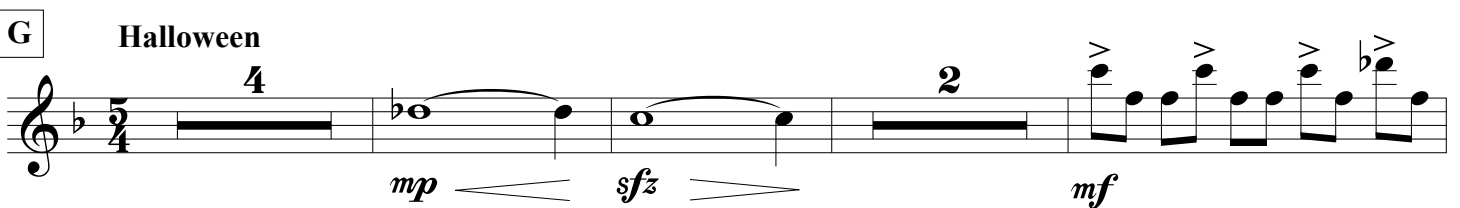
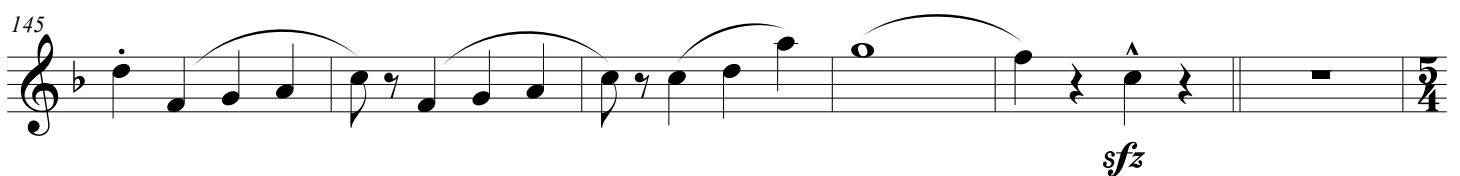
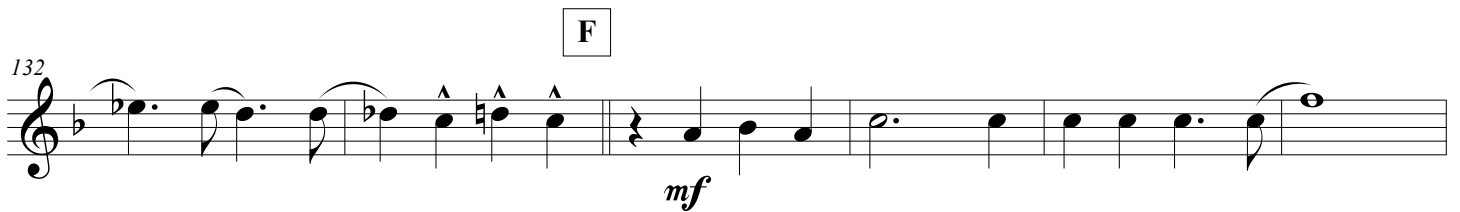
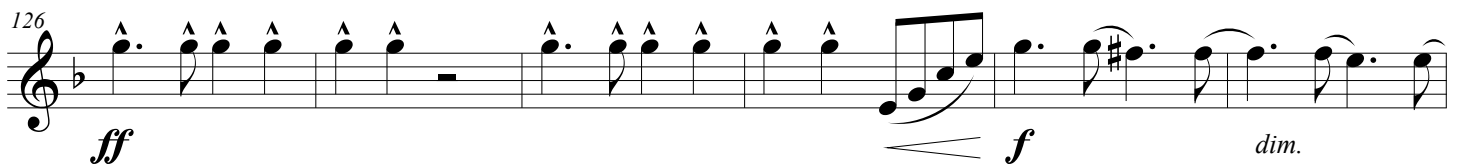
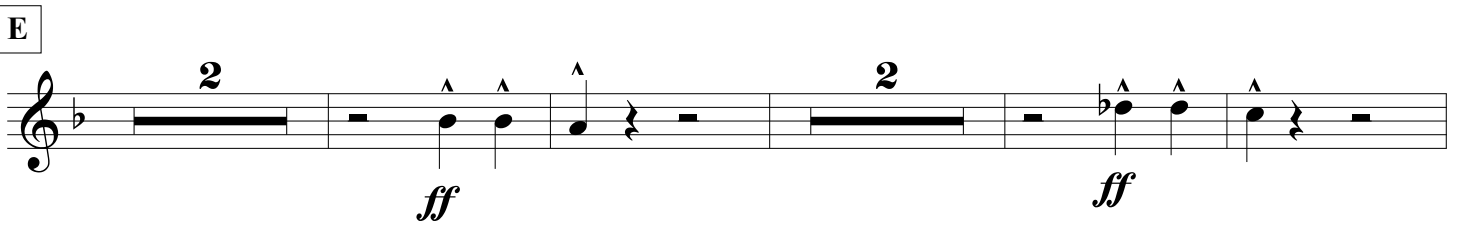
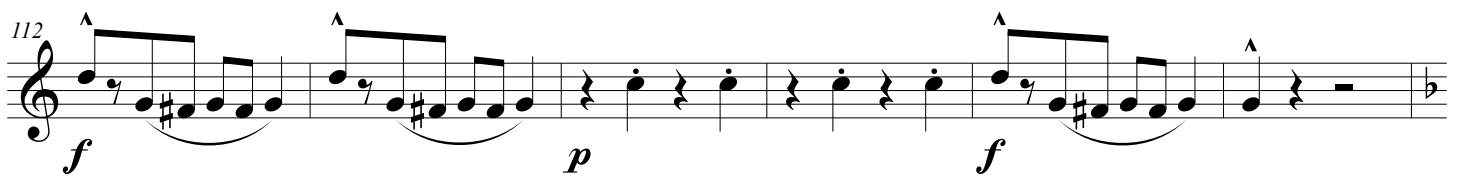
Drum roll

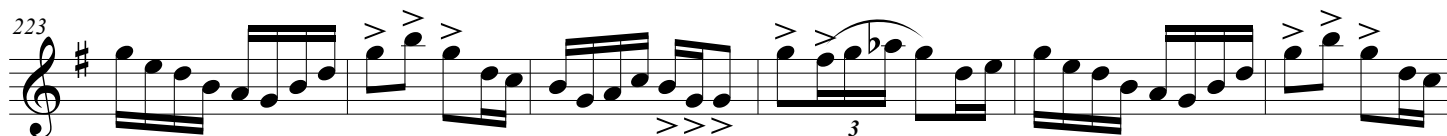
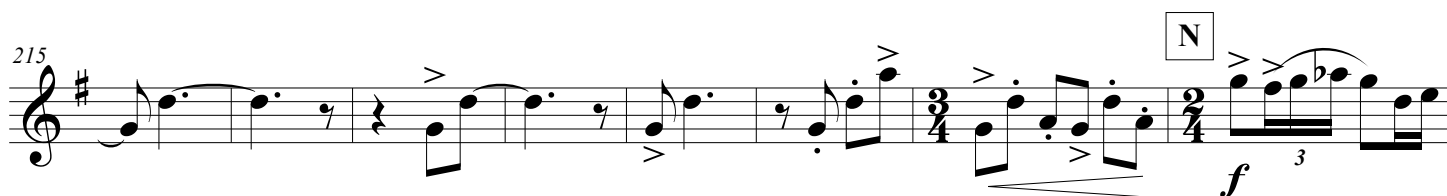
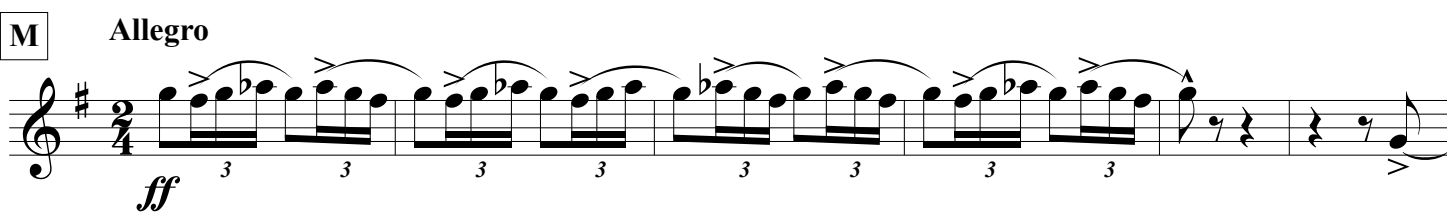
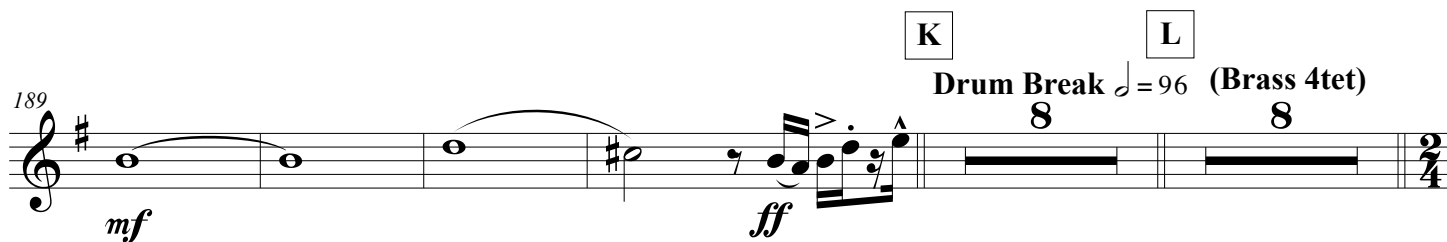
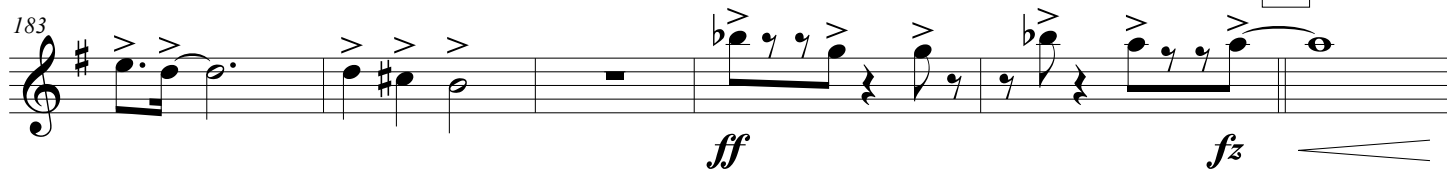
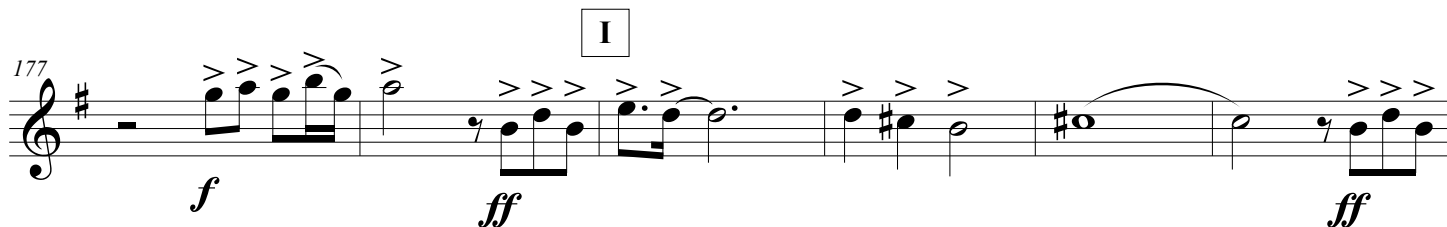
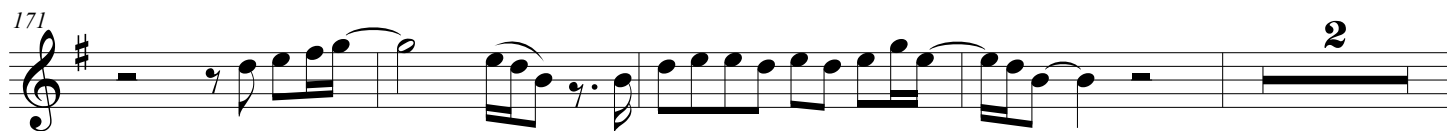
B

Grave, in 2 ♩ = 68









229 *ff*

236 *fff* *mp*

O Slow ballad, freely ♩ = 76

243 *p* *ff*

rit. Presto ♩ = 66

250 *ff*

258 *mf* *cresc.*

265 *f* *f* *ff*

275 *cresc.* *rit.*

P Tempo I *ff* *rit. al fine*

291

The musical notation is on a single staff with a treble clef and a key signature of one sharp (F#). Measure 291 begins with a treble clef, a sharp sign, and a dotted quarter note on G4 with an accent (>). Measure 292 contains an eighth note on F#4 with an accent (>), followed by a quarter note on G4 with an accent (>). Measure 293 contains a quarter note on G4 with an accent (>). Measure 294 begins with a half note on G4 with an accent (>) and a crescendo marking (*cresc.*) below the staff. Measure 295 contains a quarter note on G4. Measure 296 contains a whole note on G4 with a fermata and a fortissimo marking (*fff*) below the staff. The piece concludes with a double bar line.

cresc.

fff