

♩=100

♩=130

6

ff

12

20

2

28

34

39

7

49



55



61



Ain't No Other

1st Trombone

[illegible]

6

The musical score for the bass line of 'The Rose Tree' is written on a single staff in bass clef. The key signature has one flat (B-flat), and the time signature is 4/4. The piece begins with a whole rest, followed by a measure of four eighth notes: G2, A2, Bb2, and A2. The next measure contains a dotted half note G2. This is followed by a measure with a quarter rest and a quarter note G2. The fifth measure consists of a quarter note G2, a quarter note F2, and a half note E2. The sixth measure has a quarter rest and a quarter note D2. The seventh measure contains a quarter note D2, a quarter note C2, and a half note Bb1. The eighth measure has a quarter rest and a quarter note Bb1. The ninth measure consists of a quarter note Bb1, a quarter note A1, and a half note G1. The piece concludes with a final whole rest. The dynamic marking *ff* is placed below the first measure.

12



20



2

28

Musical notation for measure 28 in bass clef. The staff contains six measures. Measure 1 has four eighth notes: G2 (marked with a flat), F#2, E2, and D2. Measure 2 is a whole rest. Measure 3 has a quarter note G2, followed by two eighth notes F#2 and E2, and a quarter rest. Measure 4 has a quarter rest, followed by a quarter note D2, and a half rest. Measure 5 has a quarter note C2, followed by two eighth notes B1 and A1, and a quarter rest. Measure 6 has a quarter rest, followed by a quarter note G2, and a half rest.

34

34

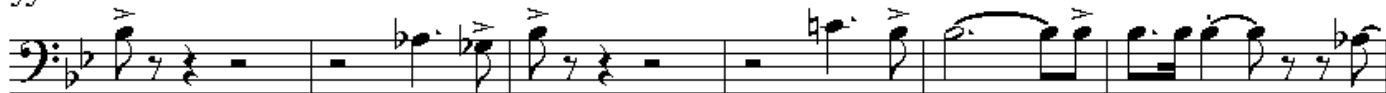
[illegible]

1st Trombone

49



55



61

